

**art. 0441**

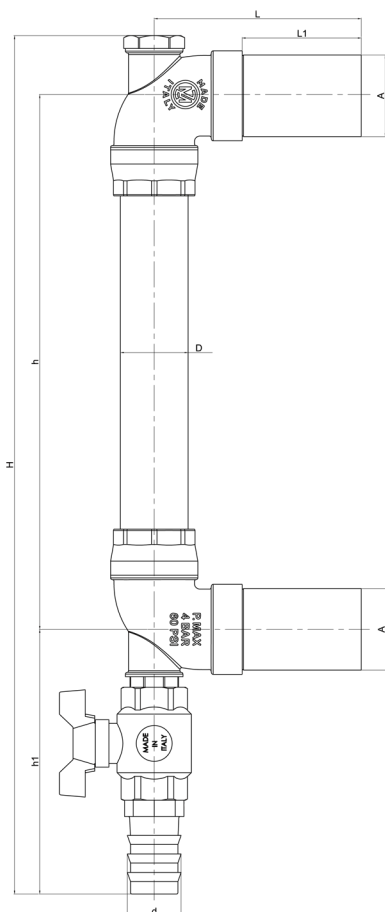
**indicatore di livello a tubo Ø50**

*Ø50 tube level indicator*

*indicateur de niveau tubolaire Ø50*

*röhrenförmiger Standzeiger Ø50*

*indicador de nivel tubular Ø50*



mm	1000	1500	2000
A	60,3	60,3	60,3
D	50	50	50
d	40	40	40
L	153,5	153,5	153,5
L1	88,5	88,5	88,5
H	1240	1740	2240
h	1000	1500	2000
h1	195	195	195

**Codici di ordinazione**

Purchase article numbers

	mm 1000	mm 1500	mm 2000
--	---------	---------	---------

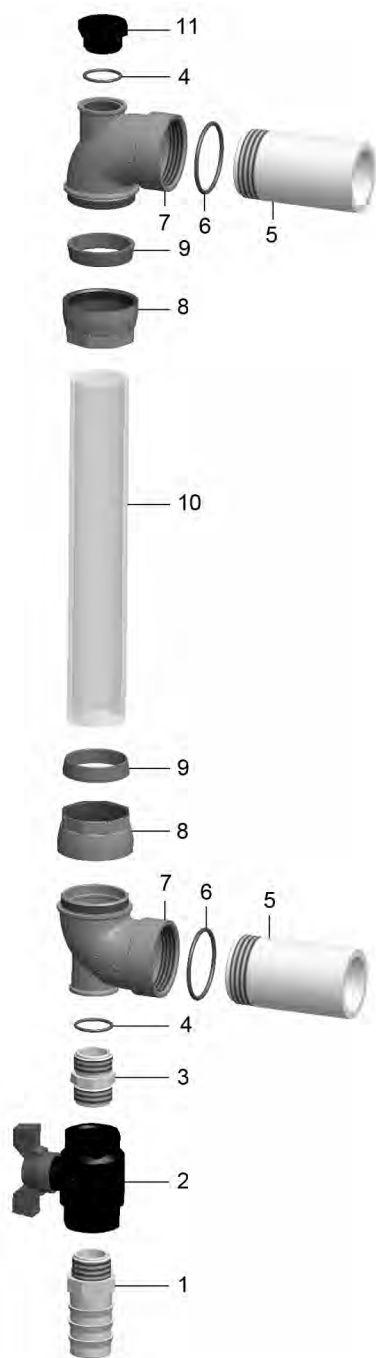
**Indicatore di livello a tubo Ø50**  
Ø50 tube level indicator

ARZO 0441 100 000

ARZO 0441 150 000

ARZO 0441 200 000

zootechnics-ecology / zootechnie-écologie  
Tierhaltung-Ökologie / acessórios para cisterna



### Condizioni di esercizio

Work conditions

DN	1000 ÷ 2000
P (bar)	4
P (PSI)	60
T (°C)	-15 +60

POS	CODICE / CODE	DENOMINAZIONE	DENOMINATION	MATERIALE	MATERIAL
1	SPZO 0250 120 024	PORTAGOMMA 1"×40	HOSE CONNECTION 1"×40	PLASTICA	PLASTIC
2	SPZO 0250 120 023	VALVOLA A SFERA F-F 1"	F-F BALL VALVE 1"	PLASTICA	PLASTIC
3	SPZO 0250 120 022	NIPLES M-M 1"×1"	NIPLES M-M 1"×1"	PLASTICA	PLASTIC
4	..OR 0500 100 009	OR 3112 (Øi 28,25×2,62)	O RING 3112 (Øi 28,25×2,62)	GOMMA NBR 70	NBR 70 RUBBER
5	GHAC 0441 050 003	MANICOTTO FILETTATO 2"	THREADED SLEEVE 2"	ACCIAIO	STEEL
6	..OR 0441 050 004	OR 159 (Øi 55,56×3,53)	O RING 159 (Øi 55,56×3,53)	GOMMA NBR 70	NBR 70 RUBBER
7	FOZO 0441 050 001	CORPO SUPERIORE	UPPER BODY	OTTONE UNI EN 1982	UNI EN 1982 BRASS
8	FOZO 0441 050 002	CORPO INFERIORE	LOWER BODY	OTTONE UNI EN 1982	UNI EN 1982 BRASS
9	GGOM 0441 050 014	ANELLO DI TENUTA	ESTATE RING	GOMMA EPDM	EPDM RUBBER
10	EPZO 0441 100 008	TUBO TRASPARENTE Ø50×908	TRASPARENT PIPE Ø50×908	METACRILATO	METACRYLATE OF METYLE
10	EPZO 0441 150 008	TUBO TRASPARENTE Ø50×1408	TRASPARENT PIPE Ø50×1408	METACRILATO	METACRYLATE OF METYLE
10	EPZO 0441 200 008	TUBO TRASPARENTE Ø50×1908	TRASPARENT PIPE Ø50×1908	METACRILATO	METACRYLATE OF METYLE
11	SPZO 0250 120 020	TAPPO 1"	COVER 1"	PLASTICA	PLASTIC